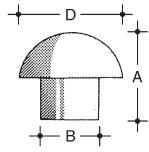


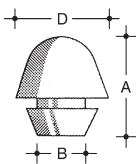
# ARTICOLI INDUSTRIALI STAMPATI

in gomma \_ silicone \_ pvc \_ polietilene

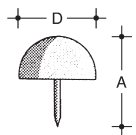
## > PARACOLPI



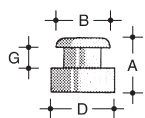
Articolo	B mm.	D mm.	A mm.
30.21.013	3	9	13
30.21.001	8,5	15	13
30.21.003	7,5	11	11
30.21.004	6	9,5	13
30.21.005	5	9,5	13
30.01.006	8,5	13	17,5
30.01.008	10	20	25
30.21.009	6	14	21
30.21.010	10	20	18
30.21.011	6	12	11
30.21.012	8	20	21



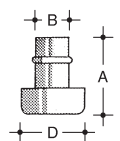
Articolo	B mm.	D mm.	A mm.
30.01.013	7	14	15



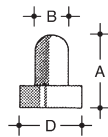
Articolo	D mm.	A mm.
30.21.014	9,5	4
30.21.002	18	8



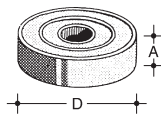
Articolo	B mm.	D mm.	A mm.	G mm.
30.21.021	8	10	8	3
30.21.023	7	10	13	6



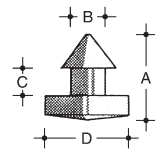
Articolo	B mm.	D mm.	A mm.
30.21.015	5	10	11,5



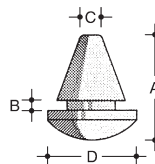
Articolo	B mm.	D mm.	A mm.
30.21.006	3,5	7	6,5
30.21.007	4,2	11	17
30.21.016	5	9,5	11
30.21.017	6	12	13
30.21.018	6	10x15	13



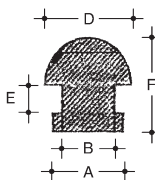
Articolo	D mm.	A mm.
30.01.026	19	5
30.01.027	25	6



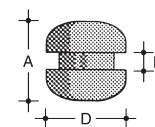
Articolo	C mm.	B mm.	D mm.	A mm.
30.21.020	4	4	12	13



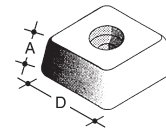
Articolo	B mm.	D mm.	A mm.	C mm.
30.21.019	1,5	13	16	7
30.21.053	1,5	8	6	6



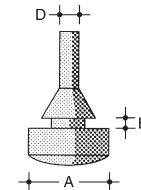
Articolo	A mm.	B mm.	D mm.	E mm.	F mm.
30.21.055	8	6	10	3	10



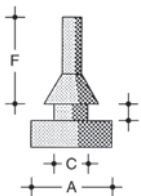
Articolo	B mm.	D mm.	A mm.
30.21.051	2,5	11,5	11,5



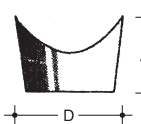
Articolo	D mm.	A mm.
30.01.045	20	10
30.01.046	22	8



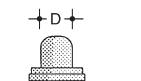
Articolo	B mm.	D mm.	A mm.
30.21.050	1,5	3	12



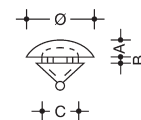
Articolo	B mm.	C mm.	A mm.	F mm.
30.21.056	2,5	5	12	12/13



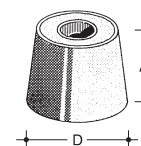
Articolo	D mm.	A mm.
30.21.025	25	17



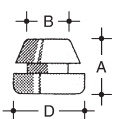
Articolo	D mm.
30.01.101	2
30.01.107	5
30.01.103	3,5
30.01.104	4,2



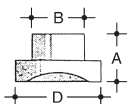
Articolo	A mm.	B mm.	C mm.	Ø mm.
30.21.054	1,5	1	4	8



Articolo	D mm.	A mm.
30.21.028	25	16

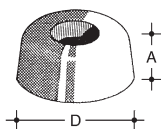


Articolo	B mm.	D mm.	A mm.
30.21.022	4,5	7,5	5,5

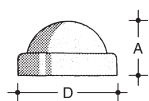


Articolo	B mm.	D mm.	A mm.
30.21.084	15	25	10
30.21.085	12	19,5	11
30.21.086	12	19,5	16

## > PARACOLPI A VITE

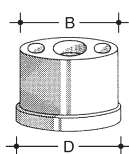


Articolo	D mm.	A mm.
30.21.029	11	7,5
30.21.030	13	6
30.21.031	16	9
30.21.032	18	8
30.21.033	18	10
30.21.034	20	10
30.21.035	19	10
30.21.036	19	13
30.21.038	21,5	11
30.21.039	22	10
30.21.040	26	10
30.21.041	25	11
30.21.043	30	9
30.21.044	31	14/18



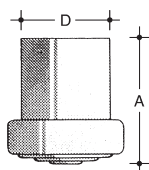
Articolo	D mm.	A mm.
30.01.023	23	13

## > PUNTALI OVALI calzanti interni



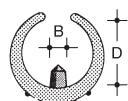
Articolo	B mm.	D mm.
32.21.099	37,5	17,5

## > PUNTALI CILINDRICI calzanti interni



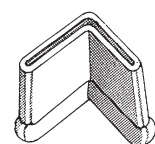
Articolo	D mm.	A mm.
32.01.047	10	16
32.01.049	12	27
32.21.050	13	23
32.01.051	14	26
32.01.053	16	26,5
32.01.054	18	28
32.01.055	18	27,7
32.01.056	19	26,6
32.01.057	20	26,5
32.01.059	21	28,5
32.21.061	22	32
32.01.062	23	32
32.01.063	24	33
32.01.064	25	27
32.01.065	26	28,5
32.01.066	28	29
32.01.067	30	28,5

## > PUNTALI A PINZA



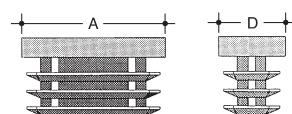
Articolo	D mm.	B mm.
31.21.200	14-16	5,5
31.21.201	16-18	5,5
31.21.202	18-20	5,5
31.21.203	20-22	5,5
31.21.204	22-24	5,5
31.21.205	24-26	5,5
31.21.206	28-30	5,5

## > PUNTALI ANGOLARI calzanti esterni



Articolo	mm.
30.21.118	25x25
30.21.119	30x30
30.21.120	35x35

## > PUNTALI RETTANGOLARI calzanti interni



Articolo	D mm.	A mm.
28.27.101	10	15
28.27.102	10	20
28.27.103	10	25
28.27.104	10	30
28.27.105	10	40
28.27.106	15	20
28.27.107	15	25
28.27.108	15	30
28.27.110	15	35
28.27.111	15	40
28.27.112	15	50
28.27.113	20	25
28.27.114	20	30
28.27.115	20	40
28.27.116	20	50
28.27.117	25	40
28.27.118	25	50
28.27.119	30	40
28.27.120	30	50
28.27.121	40	80

## > PUNTALI A PERA calzanti esterni



Articolo	D mm.
32.01.150	15
32.01.151	18
32.01.152	20
32.01.153	25
32.01.154	30
32.01.155	32

## > PUNTALI IN PVC calzanti esterni



Articolo	A mm.	B mm.	C mm.	Ø mm.
32.21.156	49	34	45	32
32.21.157	60	42	58	40
32.21.158	60	42	58	35
32.21.159	64	52	61	45