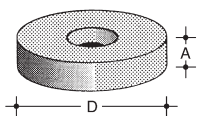


> RONDELLE CON SVASATURA

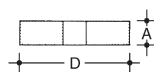


Articolo	D mm.	A mm.
33.21.087	15	4
33.21.088	20	4
33.21.089	22	4,5
33.21.090	24	4,5
33.21.091	26	4,5
33.21.092	30	4,5
33.21.093	34	4,5
33.21.094	38	4,5
33.21.095	45	5

> GUARNIZIONI PER RUBINETTI

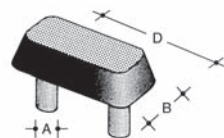
In gomma nera.

Ranelle con foro o senza, utilizzate per la tenuta sul premistoppa dei rubinetti.



Articolo	D mm.	A mm.
33.01.226	14,5	4
33.01.227	16	4
33.01.228	24	4
33.01.229	30	4

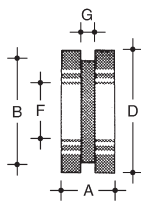
> PARACOLPO RETTANGOLARE



Articolo	D mm.	B mm.	A mm.
36.01.001	45	18	9

> PASSAFILI

Isolanti per cavi e fili elettrici proteggono dalla dispersione di corrente e dal logoramento.



Articolo	F mm.	D mm.	B mm.	A mm.	G mm.
31.21.127	2	7,5	4,5	5	1
31.21.128	3,5	9	5,5	7	1
31.21.163	4	24	10	8	2
31.21.129	5	12	7	6	1,8
31.21.130	5	13	9	8	2
31.21.164	5	16	7	7	1,5
31.21.131	6	12,5	9	6	2
31.21.132	5	14	9	6	1,8
31.21.133	5	14	9	10	5
31.21.134	6	14	10	7,5	1,8
31.21.165	7	18	9	6	1
31.21.135	8	15	10	8	1,5
31.21.166	9	20	16	8	2
31.21.136	10	18	14,5	8	2
31.21.137	7	16	10	7	1,5
31.21.138	10	22	15	7	1,5
31.21.139	8,5	18	14	8	1,8
31.21.140	10,5	21,5	15,5	11	5
31.21.141	8	18	12	11,5	5 / 3
31.21.167	11	23	20	7	1
31.21.142	12	25	17	6,5	1
31.21.143	16	30	22	8	2
31.21.144	13	22	18	10	2
31.21.145	9	16,5	12	5,5	1,5
31.21.146	9	19	15	8	5
31.21.147	11	21	17	9	6
31.21.169	15	27	22	8	1
31.21.148	15	26	20	7	2
31.21.149	16	28	21	8	2,5
31.21.170	16	29	22	13	5
31.21.150	18	33	25	13	1,5
31.21.151	18	32	25	8	2,5
31.21.171	18	33	25	13	5
31.21.152	22 / 25	38	30	9	1,5 / 5
31.21.153	23	35	26	9	2,5
31.21.154	25	42	33	7	1,5
31.21.155	28	46	36	12	2,5
31.21.156	36	56	46	11	1,5

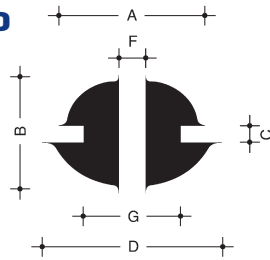
> PASSAFILI CON MEMBRANA

Articolo	F mm.	D mm.	B mm.	A mm.	G mm.
31.21.159	3/5	17	9	5	a gola variabile
31.21.160	4/10	21	12	6	-
31.21.161	5/13	25	15	7	-
31.21.162	5/17	29	19	9	-
31.21.174	8/18	35	21	9	-
31.21.157	4/12	19	14	8	1,8
31.21.158	6/14	28	22	11	3
31.21.173	8/16	30	22	8	2

ARTICOLI INDUSTRIALI STAMPATI

in gomma _ silicone _ pvc _ polietilene

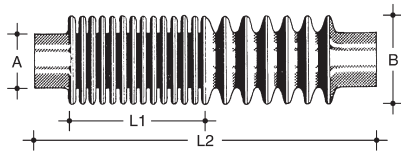
> PASSACAPO



Articolo	A mm.	B mm.	C mm.	D mm.	F mm.	G mm.
31.01.175	36	22	3,2	42	18/21	30
31.01.176	31	19	3,2	36	9/11	25
31.01.177	24	22	3,2	40	9/11	25
31.01.178	22	17	3,0	26	6/16	15

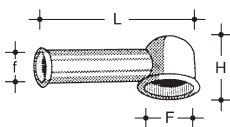
> SOFFIETTI E TUBI CORRUGATI

Proteggono le parti mobili dei macchinari dalla polvere e da altre sostanze, consentendo il più ampio movimento in estensione e in contrazione.



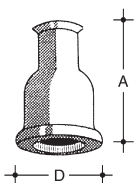
Articolo	A mm.	B mm.	L1 mm.	L2 mm.	Numero spire
38.03.005	30	45	25	150	12
38.03.011	85	109	50	210	9
38.03.021	140	200	50	400	10
38.03.022	20	45	30	75	8
38.03.023	45	100	35	140	4
38.03.024	20	54	35	75	8
38.03.025	20	54	35	75	8
38.03.026	70	100	70	120	11
38.03.027	30	75	45	180	8
38.03.028	70	110	90	350	12

> PIPETTE



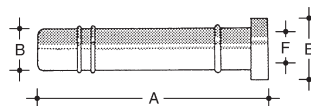
Articolo	H mm.	f mm.	F mm.	L mm.
34.03.236	12	7	12	40
34.03.237	16	7	15	41
34.03.243	25	8	15	40
34.03.244	8	1,5	9	31

> CUFFIETTE



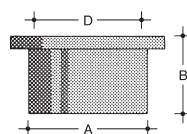
Articolo	D mm.	A mm.
33.01.166	15	25
33.01.167	23	24
33.01.068	13	25

> BOCCOLE



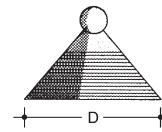
Articolo	F mm.	B mm.	D mm.	A mm.
34.21.230	4	7	10	25
34.21.231	6,5	9	14	40
34.21.236	7,5	7,5	16	40
34.21.232	8	10	13	51
34.21.233	8	11	14	33
34.21.234	10	11	17	43
34.21.235	10	10	18	73
34.21.237	3,5x6	9	8x11	25

> CAPPuccio



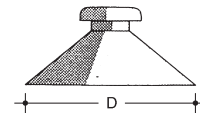
Articolo	B mm.	D mm.	A mm.
34.01.169	13	18	20

> VENTOSE CON PALLINA



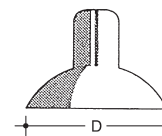
Articolo	D mm.
35.21.100	20
35.21.101	25
35.21.102	30

> VENTOSE CON BOTTONE



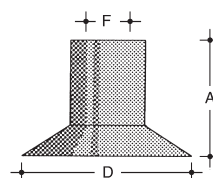
Articolo	D mm.
35.01.106	35
35.01.107	38
35.01.108 con vite da 5 m/a	38

> VENTOSE CON CILINDRETTO



Articolo	D mm.
35.21.111	14
35.21.112	20
35.21.113	23
35.21.114	29

> VENTOSA ASPIRAFOGLI



Articolo	A mm.	D mm.	F mm.
35.11.001	17	25	5
35.01.002	15	25	5
35.01.110	15	17	12
35.01.111	27	27	10
35.01.112	38	30	10
35.01.113	30	43	12
35.01.114	27	35	10