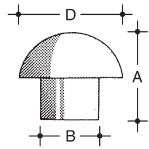


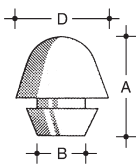
ARTICOLI INDUSTRIALI STAMPATI

in gomma _ silicone _ pvc _ polietilene

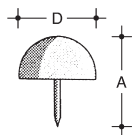
> PARACOLPI



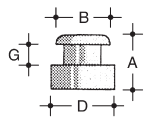
Articolo	B mm.	D mm.	A mm.
30.21.013	3	9	13
30.21.001	8,5	15	13
30.21.003	7,5	11	11
30.21.004	6	9,5	13
30.21.005	5	9,5	13
30.01.006	8,5	13	17,5
30.01.008	10	20	25
30.21.009	6	14	21
30.21.010	10	20	18
30.21.011	6	12	11
30.21.012	8	20	21



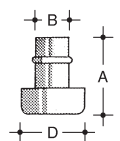
Articolo	B mm.	D mm.	A mm.
30.01.013	7	14	15



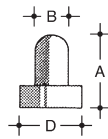
Articolo	D mm.	A mm.
30.21.014	9,5	4
30.21.002	18	8



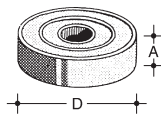
Articolo	B mm.	D mm.	A mm.	G mm.
30.21.021	8	10	8	3
30.21.023	7	10	13	6



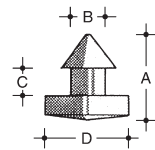
Articolo	B mm.	D mm.	A mm.
30.21.015	5	10	11,5



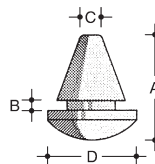
Articolo	B mm.	D mm.	A mm.
30.21.006	3,5	7	6,5
30.21.007	4,2	11	17
30.21.016	5	9,5	11
30.21.017	6	12	13
30.21.018	6	10x15	13



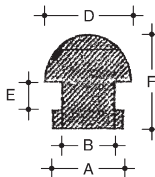
Articolo	D mm.	A mm.
30.01.026	19	5
30.01.027	25	6



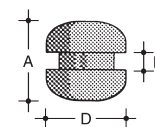
Articolo	C mm.	B mm.	D mm.	A mm.
30.21.020	4	4	12	13



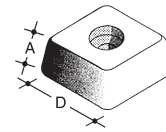
Articolo	B mm.	D mm.	A mm.	C mm.
30.21.019	1,5	13	16	7
30.21.053	1,5	8	6	6



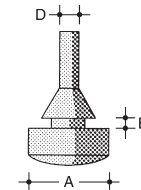
Articolo	A mm.	B mm.	D mm.	E mm.	F mm.
30.21.055	8	6	10	3	10



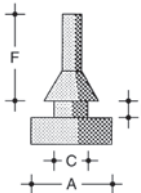
Articolo	B mm.	D mm.	A mm.
30.21.051	2,5	11,5	11,5



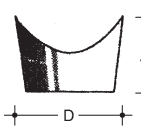
Articolo	D mm.	A mm.
30.01.045	20	10
30.01.046	22	8



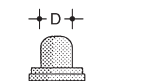
Articolo	B mm.	D mm.	A mm.
30.21.050	1,5	3	12



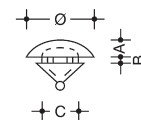
Articolo	B mm.	C mm.	A mm.	F mm.
30.21.056	2,5	5	12	12/13



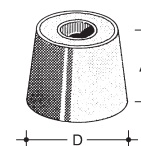
Articolo	D mm.	A mm.
30.21.025	25	17



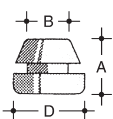
Articolo	D mm.
30.01.101	2
30.01.107	5
30.01.103	3,5
30.01.104	4,2



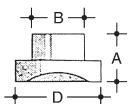
Articolo	A mm.	B mm.	C mm.	Ø mm.
30.21.054	1,5	1	4	8



Articolo	D mm.	A mm.
30.21.028	25	16

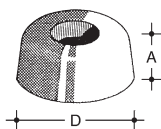


Articolo	B mm.	D mm.	A mm.
30.21.022	4,5	7,5	5,5

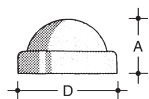


Articolo	B mm.	D mm.	A mm.
30.21.084	15	25	10
30.21.085	12	19,5	11
30.21.086	12	19,5	16

> PARACOLPI A VITE

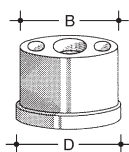


Articolo	D mm.	A mm.
30.21.029	11	7,5
30.21.030	13	6
30.21.031	16	9
30.21.032	18	8
30.21.033	18	10
30.21.034	20	10
30.21.035	19	10
30.21.036	19	13
30.21.038	21,5	11
30.21.039	22	10
30.21.040	26	10
30.21.041	25	11
30.21.043	30	9
30.21.044	31	14/18



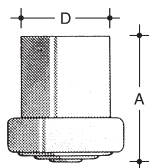
Articolo	D mm.	A mm.
30.01.023	23	13

> PUNTALI OVALI calzanti interni



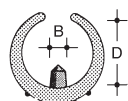
Articolo	B mm.	D mm.
32.21.099	37,5	17,5

> PUNTALI CILINDRICI calzanti interni



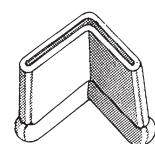
Articolo	D mm.	A mm.
32.01.047	10	16
32.01.049	12	27
32.21.050	13	23
32.01.051	14	26
32.01.053	16	26,5
32.01.054	18	28
32.01.055	18	27,7
32.01.056	19	26,6
32.01.057	20	26,5
32.01.059	21	28,5
32.21.061	22	32
32.01.062	23	32
32.01.063	24	33
32.01.064	25	27
32.01.065	26	28,5
32.01.066	28	29
32.01.067	30	28,5

> PUNTALI A PINZA calzanti esterni



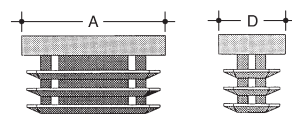
Articolo	D mm.	B mm.
31.21.200	14-16	5,5
31.21.201	16-18	5,5
31.21.202	18-20	5,5
31.21.203	20-22	5,5
31.21.204	22-24	5,5
31.21.205	24-26	5,5
31.21.206	28-30	5,5

> PUNTALI ANGOLARI calzanti esterni



Articolo	mm.
30.21.118	25x25
30.21.119	30x30
30.21.120	35x35

> PUNTALI RETTANGOLARI calzanti interni



Articolo	D mm.	A mm.
28.27.101	10	15
28.27.102	10	20
28.27.103	10	25
28.27.104	10	30
28.27.105	10	40
28.27.106	15	20
28.27.107	15	25
28.27.108	15	30
28.27.110	15	35
28.27.111	15	40
28.27.112	15	50
28.27.113	20	25
28.27.114	20	30
28.27.115	20	40
28.27.116	20	50
28.27.117	25	40
28.27.118	25	50
28.27.119	30	40
28.27.120	30	50
28.27.121	40	80

> PUNTALI A PERA calzanti esterni



Articolo	D mm.
32.01.150	15
32.01.151	18
32.01.152	20
32.01.153	25
32.01.154	30
32.01.155	32

> PUNTALI IN PVC calzanti esterni

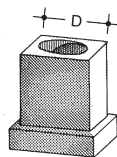


Articolo	A mm.	B mm.	C mm.	Ø mm.
32.21.156	49	34	45	32
32.21.157	60	42	58	40
32.21.158	60	42	58	35
32.21.159	64	52	61	45

ARTICOLI INDUSTRIALI STAMPATI

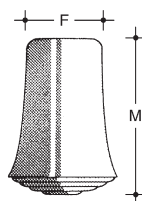
in gomma _ silicone _ pvc _ polietilene

> PUNTALI QUADRI calzanti interni



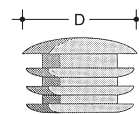
Articolo	D mm.
32.21.068	12
32.21.069	13
32.21.070	14
32.21.071	15
32.21.072	16
32.21.073	17
32.21.074	18
32.21.075	19
32.21.076	20
32.21.077	21
32.21.078	22
32.21.079	25
32.21.080	30
32.21.081	35
32.21.082	40

> PUNTALI calzanti esterni



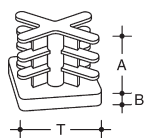
Articolo	F mm.	M mm.
32.21.117	6	17,5
32.21.102	8	26
32.21.103	10	30
32.21.104	12	30
32.01.105	12	30
32.01.106	14	30
32.01.107	16	36
32.01.108	18	38
32.01.109	20	40
32.01.110	22	40
32.01.111	24	40
32.01.112	26	40
32.01.113	28	40
32.01.114	30	40
32.01.115	32	40

> COPRITESTA CILINDRICO calzante interno



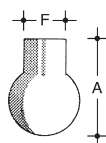
Articolo	D mm.
28.27.050	10
28.27.051	12
28.27.052	15
28.27.053	18
28.27.054	20
28.27.055	22
28.27.056	25
28.27.057	28
28.27.058	30
28.27.059	32
28.27.060	35
28.27.061	40
28.27.062	45
28.27.063	50
28.27.064	60
28.27.065	80

> PUNTALI QUADRI ALETTATI calzanti interni

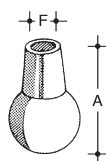


Articolo	T mm.	A mm.	B mm.
28.27.212	12x12	12	5
28.27.215	15x15	11	4
28.27.216	16x16	17	5
28.27.218	18x18	12	5
28.27.220	20x20	17	5
28.27.222	22x22	17	5
28.27.225	25x25	20	6
28.27.230	30x30	21	6
28.27.235	35x35	21	6
28.27.240	40x40	21	6
28.27.250	50x50	21	6
28.27.260	60x60	22	6
28.27.270	70x70	25	6
28.27.280	80x80	30	6

> PUNTALI A BASE TONDA calzanti esterni

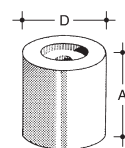


Articolo	F mm.	A mm.
30.21.121	3	13

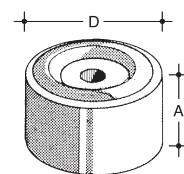


Articolo	F mm.	A mm.
30.21.122	5	22
30.21.123	6	22

> FERMAPORTE

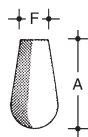


Articolo	D mm.	A mm.
34.21.163	20	23
32.21.164	18,5	18



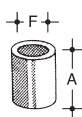
Articolo	D mm.	A mm.
34.01.165	40	25

> PUNTALI MICRO calzanti esterni

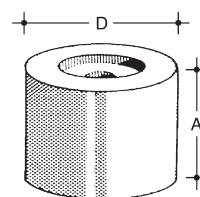


Articolo	F mm.	A mm.
30.21.124	3	12,5
30.21.125	5	12,5

> CILINDRETTO calzante esterno

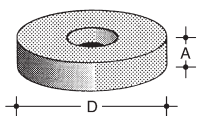


Articolo	F mm.	M mm.
30.21.126	5	8
30.21.127	4	9
30.21.128	2	5



Articolo	D mm.	A mm.
34.01.166	30	30
34.01.167	37,5	30
34.01.168	30	25
34.01.169	25	24

> RONDELLE CON SVASATURA

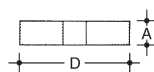


Articolo	D mm.	A mm.
33.21.087	15	4
33.21.088	20	4
33.21.089	22	4,5
33.21.090	24	4,5
33.21.091	26	4,5
33.21.092	30	4,5
33.21.093	34	4,5
33.21.094	38	4,5
33.21.095	45	5

> GUARNIZIONI PER RUBINETTI

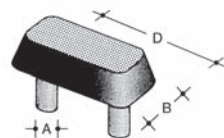
In gomma nera.

Ranelle con foro o senza, utilizzate per la tenuta sul premistoppa dei rubinetti.



Articolo	D mm.	A mm.
33.01.226	14,5	4
33.01.227	16	4
33.01.228	24	4
33.01.229	30	4

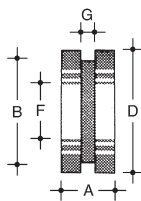
> PARACOLPO RETTANGOLARE



Articolo	D mm.	B mm.	A mm.
36.01.001	45	18	9

> PASSAFILI

Isolanti per cavi e fili elettrici proteggono dalla dispersione di corrente e dal logoramento.



Articolo	F mm.	D mm.	B mm.	A mm.	G mm.
31.21.127	2	7,5	4,5	5	1
31.21.128	3,5	9	5,5	7	1
31.21.163	4	24	10	8	2
31.21.129	5	12	7	6	1,8
31.21.130	5	13	9	8	2
31.21.164	5	16	7	7	1,5
31.21.131	6	12,5	9	6	2
31.21.132	5	14	9	6	1,8
31.21.133	5	14	9	10	5
31.21.134	6	14	10	7,5	1,8
31.21.165	7	18	9	6	1
31.21.135	8	15	10	8	1,5
31.21.166	9	20	16	8	2
31.21.136	10	18	14,5	8	2
31.21.137	7	16	10	7	1,5
31.21.138	10	22	15	7	1,5
31.21.139	8,5	18	14	8	1,8
31.21.140	10,5	21,5	15,5	11	5
31.21.141	8	18	12	11,5	5 / 3
31.21.167	11	23	20	7	1
31.21.142	12	25	17	6,5	1
31.21.143	16	30	22	8	2
31.21.144	13	22	18	10	2
31.21.145	9	16,5	12	5,5	1,5
31.21.146	9	19	15	8	5
31.21.147	11	21	17	9	6
31.21.169	15	27	22	8	1
31.21.148	15	26	20	7	2
31.21.149	16	28	21	8	2,5
31.21.170	16	29	22	13	5
31.21.150	18	33	25	13	1,5
31.21.151	18	32	25	8	2,5
31.21.171	18	33	25	13	5
31.21.152	22 / 25	38	30	9	1,5 / 5
31.21.153	23	35	26	9	2,5
31.21.154	25	42	33	7	1,5
31.21.155	28	46	36	12	2,5
31.21.156	36	56	46	11	1,5

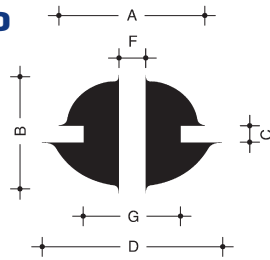
> PASSAFILI CON MEMBRANA

Articolo	F mm.	D mm.	B mm.	A mm.	G mm.
31.21.159	3/5	17	9	5	a gola variabile
31.21.160	4/10	21	12	6	-
31.21.161	5/13	25	15	7	-
31.21.162	5/17	29	19	9	-
31.21.174	8/18	35	21	9	-
31.21.157	4/12	19	14	8	1,8
31.21.158	6/14	28	22	11	3
31.21.173	8/16	30	22	8	2

ARTICOLI INDUSTRIALI STAMPATI

in gomma _ silicone _ pvc _ polietilene

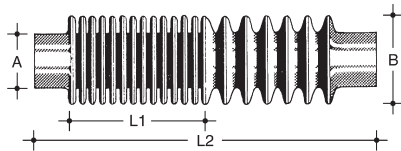
> PASSACAPO



Articolo	A mm.	B mm.	C mm.	D mm.	F mm.	G mm.
31.01.175	36	22	3,2	42	18/21	30
31.01.176	31	19	3,2	36	9/11	25
31.01.177	24	22	3,2	40	9/11	25
31.01.178	22	17	3,0	26	6/16	15

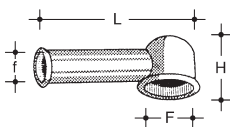
> SOFFIETTI E TUBI CORRUGATI

Proteggono le parti mobili dei macchinari dalla polvere e da altre sostanze, consentendo il più ampio movimento in estensione e in contrazione.



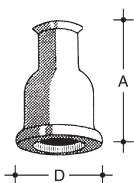
Articolo	A mm.	B mm.	L1 mm.	L2 mm.	Numero spire
38.03.005	30	45	25	150	12
38.03.011	85	109	50	210	9
38.03.021	140	200	50	400	10
38.03.022	20	45	30	75	8
38.03.023	45	100	35	140	4
38.03.024	20	54	35	75	8
38.03.025	20	54	35	75	8
38.03.026	70	100	70	120	11
38.03.027	30	75	45	180	8
38.03.028	70	110	90	350	12

> PIPETTE



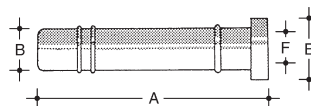
Articolo	H mm.	f mm.	F mm.	L mm.
34.03.236	12	7	12	40
34.03.237	16	7	15	41
34.03.243	25	8	15	40
34.03.244	8	1,5	9	31

> CUFFIETTE



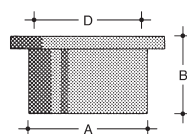
Articolo	D mm.	A mm.
33.01.166	15	25
33.01.167	23	24
33.01.068	13	25

> BOCCOLE



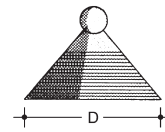
Articolo	F mm.	B mm.	D mm.	A mm.
34.21.230	4	7	10	25
34.21.231	6,5	9	14	40
34.21.236	7,5	7,5	16	40
34.21.232	8	10	13	51
34.21.233	8	11	14	33
34.21.234	10	11	17	43
34.21.235	10	10	18	73
34.21.237	3,5x6	9	8x11	25

> CAPPuccio



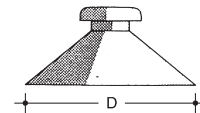
Articolo	B mm.	D mm.	A mm.
34.01.169	13	18	20

> VENTOSE CON PALLINA



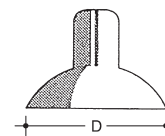
Articolo	D mm.
35.21.100	20
35.21.101	25
35.21.102	30

> VENTOSE CON BOTTONE



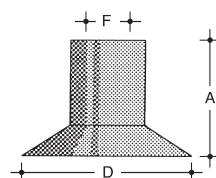
Articolo	D mm.
35.01.106	35
35.01.107	38
35.01.108 con vite da 5 m/a	38

> VENTOSE CON CILINDRETTO



Articolo	D mm.
35.21.111	14
35.21.112	20
35.21.113	23
35.21.114	29

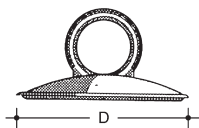
> VENTOSA ASPIRAFOGLI



Articolo	A mm.	D mm.	F mm.
35.11.001	17	25	5
35.01.002	15	25	5
35.01.110	15	17	12
35.01.111	27	27	10
35.01.112	38	30	10
35.01.113	30	43	12
35.01.114	27	35	10

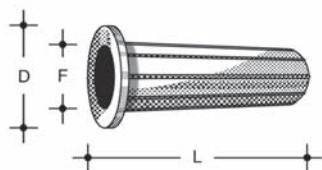
> VENTOSA CON ANELLO

Particolarmente indicata per il sollevamento di pannelli di grandi dimensioni, di qualsiasi materiale con superficie liscia (es.: vetro, lamiera, plastica)



Articolo	D mm.
35.01.099	100

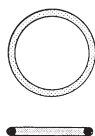
> MANOPOLA PER CARRIOLA



Articolo	L mm.	F mm.	D mm.
35.21.103	107	25	41

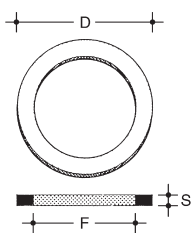
> ANELLI TIPO O-RING

Vasto assortimento di anelli in gomma sintetica, viton, silicone nelle misure internazionali.



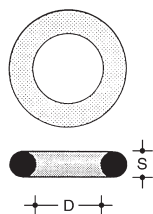
> ANELLI STAMPATI A SEZIONE RETTANGOLARE

Su richiesta si realizzano ranelle di ogni tipo e misura.



Articolo	F mm.	D mm.	S mm.
33.01.184	25	35	3
33.01.185	30	40	3
33.01.186	35	45	3
33.01.187	37	51	3
33.01.188	40	50	3
33.01.189	44	65	3
33.01.191	50	63	3
33.01.193	55	68	3
33.01.196	60	73	3
33.01.197	62	80	3
33.01.199	65	78	3
33.01.200	68	82	3
33.01.202	75	89	3

> ANELLI STAMPATI A SEZIONE TONDA



Articolo	S mm.	D mm.
----------	-------	-------

In gomma

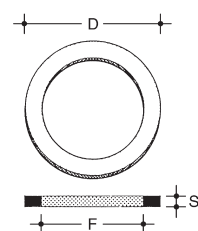
35.01.258	5	10
35.01.261	5	13
35.01.263	6	14
35.01.266	6	16
35.01.267	6	17
35.01.268	7	19
35.01.270	7	20
35.01.271	7	21
35.01.272	7	22
35.01.273	7	23
35.01.278	7	27

In para

35.11.255	4	8
35.11.266	4	16
35.11.267	1,5	18
35.11.276	5	25
35.11.278	6,36	25,7
35.11.279	4	30
35.11.280	7	30
35.11.281	10	30
35.11.282	11	30
35.11.283	7,5	37
35.11.293 c/cav est.	6	56
35.11.294 c/cav int.	6	56
35.11.295	5	95
35.11.296	7,6	62
35.11.297	5	70
35.11.298	7,6	77
35.11.299	7,6	93
35.11.300	6	140
35.11.301	3	154

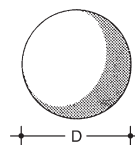
> RONDELLE TRANCIATE A SEZIONE RETTANGOLARE

Tutte le misure su richiesta. Si realizzano anche piccole quantità.



> VALVOLE SFERICHE

In gomma nera con nucleo di ghisa interno (sotto i 30 mm. senza nucleo). Particolarmente indicate come valvole di tenuta in pompe di aspirazione o di mandata, per ogni tipo di fluido.



Articolo	D mm.
----------	-------

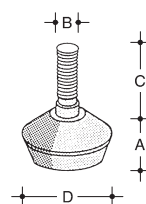
Solo gomma

33.01.203	12
33.01.204	14
33.01.205	15
33.01.206	16
33.01.207	18
33.01.208	20
33.01.209	22
33.01.210	25
33.01.211	28

Nucleo in ghisa o ferro

33.05.212	30
33.05.213	35
33.05.214	40
33.05.215	45
33.05.216	50
33.05.217	55
33.05.218	60
33.05.219	70
33.05.220	75
33.05.221	80
33.05.222	85
33.05.223	90
33.05.224	95
33.05.225	100

> PIEDINI REGOLABILI CROMATI

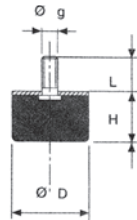


Articolo	D mm.	B mm.	C mm.	A mm.
26.35.001	20	6	13	7
26.35.002	25	8	20	10
26.35.003	30	8	20	11,5
26.35.004	35	8	20	12
26.35.005	40	8	25	13,5
26.35.006	25	10	20	10
26.35.007	30	10	20	11,5
26.35.008	35	10	20	12
26.35.009	40	10	25	13,5
26.35.010	50	10	30	15,5

ARTICOLI INDUSTRIALI STAMPATI

in gomma _ silicone _ pvc _ polietilene

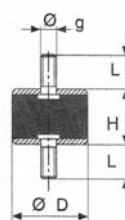
> ANTIVIBRANTI PIEDINO M



Articolo	H mm.	D mm.	L mm.	G mm.
26.35.061	15	25	18	6
26.35.062	15	30	23	8
26.35.063	20	25	18	6
26.35.064	20	30	23	8
26.35.065	20	40	23	8
26.35.066	20	50	29	10
26.35.067	25	75	47	12
26.35.068	30	75	47	12
26.35.069	40	75	47	12
26.35.070	60	75	37	12
26.35.125	100	40	47	16

Tante altre misure su richiesta

> ANTIVIBRANTI CILINDRICI M2



Articolo	H mm.	D mm.	L mm.	G mm.
25.35.057	15	20	16	6
25.35.058	20	20	15	6
25.35.059	20	30	23	8
25.35.060	15	30	23	8
25.35.061	25	25	18	6
25.35.062	30	30	23	8
25.35.063	30	40	23	8
25.35.064	20	50	27	10
25.35.065	30	75	47	12

Tante altre misure su richiesta

TRAFILATI E GUARNIZIONI

in gomma _ silicone _ pvc

Disponibili nelle dimensioni sottoindicate. Oltre alle sagome elencate sono realizzabili trafilati su disegno del cliente.

> CORDA SEZIONE TONDA



Articolo	Ø mm.			
22.01.001 Gomma nera SBR	2	3	4	5
	6	7	8	9
	10	12	15	18
	20	22	25	30

Articolo	Ø mm.			
22.03.002 Gomma nera NBR	1,78	2	2,62	3
	3,53	4	5	10
	12	15	18	

Articolo	Ø mm.			
22.11.007 Gomma para	2	3	4	5
	6	7	8	9
	10	12	14	15
	16	18	20	22
	25	30		

Articolo	Ø mm.			
22.17.014 Gomma spugna a cellula chiusa	3	4	5	6
	8	10	12	15
	20	25		

Articolo	Ø mm.			
22.18.010 Gomma spugna a cellula aperta	5	6	7	8
	10	12	15	18
	20			

> LISTA SEZIONE SEMITONDA



Articolo	mm.			
22.18.013 Gomma spugna a cellula aperta	6x10	6x18	8x16	11x20
	20x30			

> LISTA SEZIONE D



Articolo	mm.		
22.17.009 EPDM espanso adesivo su un lato	12x10	14x12	21x15

> LISTA SEZIONE QUADRA



Articolo	mm.			
22.11.008 Gomma para	4x4	5x5	6x6	8x8
	10x10	12x12	15x15	20x20

Articolo	mm.			
22.01.003 Gomma nera EPDM	3x3	4x4	5x5	6x6
	7x7	8x8	10x10	12x12
	15x15	18x18	20x20	25x25
	30x30			

Articolo	mm.			
22.03.004 Gomma nera NBR	3x3	4x4	5x5	6x6
	7x7	8x8	10x10	12x12
	15x15	18x18	20x20	25x25
	30x30			

Articolo	mm.			
22.18.011 Gomma spugna a cellula aperta	10x10	14x14	15x15	20x20

> LISTA SEZIONE RETTANGOLARE



Articolo	mm.			
22.01.005 Gomma nera EPDM	2x5	2x7	3x5	3x6
	3x7	3x10	3x16	3x20
	3x25	3x30	4x6	5x10
	5x12	5x15	5x20	5x25
	5x30	6x12	6x15	7x10
	7x25	8x10	8x15	8x20
	8x25	10x12	10x15	10x20
	10x25	10x30	12x17	12x20
	15x20	15x25	15x30	20x25
	20x30	25x30		

Articolo	mm.			
22.18.012 Gomma spugna a cellula aperta	3x25	4x13	4x85	5x10
	5x15	6x25	7x20	7 _{1/2} x10 _{1/2}
	8x9	10x15	10x25	12x20
	12x21			

Articolo	mm.			
22.03.006 Gomma nera NBR	3x15	3x20	3x25	3x30
	4x6	5x10	5x12	5x15
	5x20	5x25	6x12	6x15
	6x20	7x25	8x10	8x12
	8x15	8x20	10x12	10x15
	10x20	10x25	10x30	12x17
	12x20	12x25	15x20	20x30

Articolo	mm.			
22.11.009 Gomma para	3x10	4x8	5x9	6x10
	8x12	10x12	10x15	10x20
	15x20			

Articolo	mm.			
22.17.008 Gomma spugna a cellula chiusa Adesivo su un lato	3x5	3x10	3x15	3x20
	5x5	5x10	5x15	5x20
	8x20	8x25	10x15	8x15
	10x20	10x25	10x30	10x10
	15x20	15x30	20x30	

Articolo	mm.			
22.17.015 Tubo gomma spugna a cellula chiusa	13x35	20x40		